



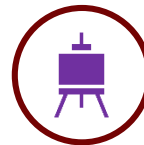
## Matawan-Aberdeen | Multi-Tiered System of Support Overview

# Parent Guide to Our Multi-Tiered System of Supports



### What Can I Expect from Schools Using a Multi-Tiered System of Supports?

- ❑ Notice of academic or behavior concerns (early identification and intervention)
- ❑ Feedback on how my child is responding and making progress
- ❑ Involvement in individual, data-based problem solving for my child
- ❑ Information on my child's progress in relation to meeting grade-level standards
- ❑ Instruction and intervention that is matched to my child's needs



### What is a Multi-Tiered System of Supports?

A Multi-Tiered System of Supports (MTSS) is not a separate program but rather a way of organizing instruction and intervention to assist all students. The goal of the MTSS framework is to provide high-quality instruction and supports based on student need. The MTSS framework is a schoolwide approach to student support, with teachers, interventionists, counselors, and other specialists working as a team to assess students and plan interventions. The use of research-based strategies and evidence-based interventions are utilized and adjustments to instruction, strategies, and interventions are made as needed.

*"Our mission is to provide our students with high quality instruction and utilize a tiered system of support to address academic and behavioral challenges. We will focus on data-driven decision making and a problem solving approach to guide instruction and match our students' needs"*



# What Are Tiered Supports?

A Multi-Tiered System of Supports organizes instruction and interventions into tiers (levels of support)

## TIER 1

All students receive high-quality instruction in academics

## TIER 2

In addition to TIER 1, students identified as needing more support also receive intervention and support by small group instruction and/or a narrowed focus of instruction within their classroom.

## TIER 3

In addition to TIERS 1 and 2, students receiving TIER 3 intervention receive the most intensive supports based on individual need. The difference is individual team-based problem-solving, increased time, and narrowed focus of instruction. Students receiving TIER 3 support may be pulled out of the classroom to provide intervention specific to individual needs and targeted skills.



### How Does the School Identify and Support Students?

- During the school year, schools screen all students through a universal diagnostic assessment to see which students are meeting grade-level standards and which may need additional support
- A problem solving approach is used to plan interventions and provide interventions
- At the Tier 3 level, individual diagnostic assessments may be administered to help plan interventions.
- Student supports are tiered based on multiple measures (universal diagnostic along with additional measures) with increased levels of support by tier.
- Interventionists work closely with your child's teacher(s) to problem solve and develop plans for intervention.

### Who Do I Contact if I Have Questions Related to my Child's MTSS Support?

- Your child's educator
- Your child's interventionist educator
- School administrator
- The Department of Student Services & Programs

